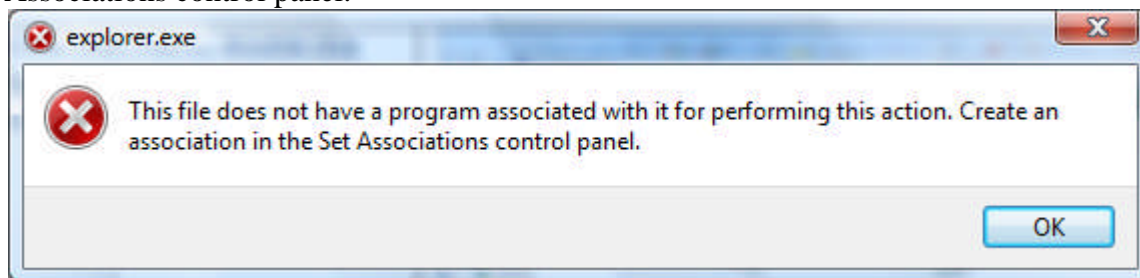


Configuring Galileo Print Manager v4.0 (GPM) On Windows Vista

Products Affected:

- Microsoft Vista, all versions
- Galileo Print Manager v4.0
- Focalpoint Print Manager v3.0

Attempting to make changes to or configure Galileo Print Manager (GPM) from Start, All Programs, Galileo Print Manager, Configurations results in the following error; “This file does not have a program associated with it for performing this action. Create an association in the Set Associations control panel.”



It is not possible to create such as association using the control panel.

There two ways to solve this problem.

Solution #1:

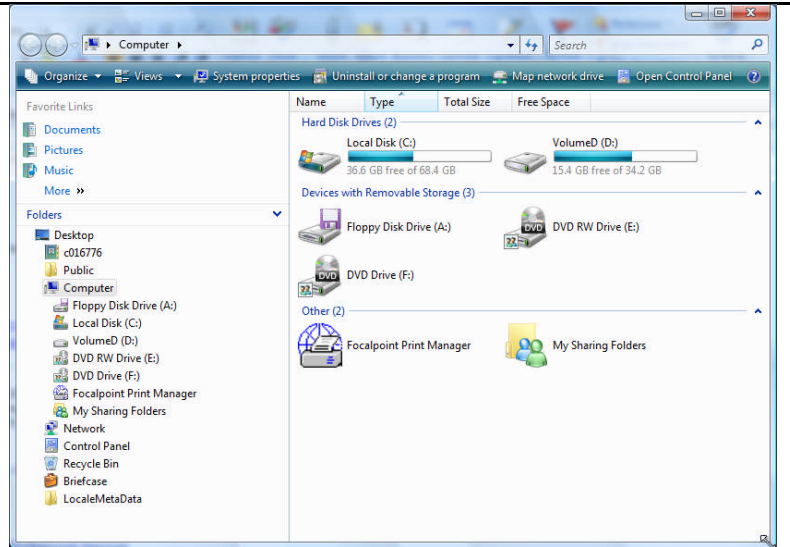
- Download a replacement shortcut for the GPM program group
- Copy and paste the downloaded shortcut (.LNK) file into the Galileo Print Manager Group
- Use this new shortcut when you need to make changes to GPM
- Click here to download a new Configurations For Vista shortcut.
- When presented with the option to Open or Save, save the file.
- After the file has downloaded, Select Open Folder
- Right Click the Configuration For Vista shortcut, select Copy, then open the Galileo Print Manager Group and click Edit and Paste.
- Use this new shortcut when you need to make changed to GPM.

Solution #2

If you are uncomfortable with the process of downloading a file and copying the file to a folder, you may use the following procedure:

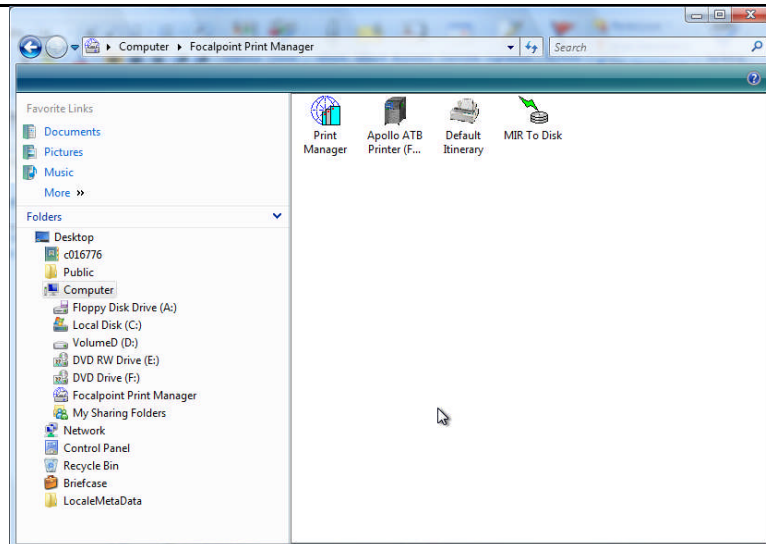
1. If running Focalpoint Print Manager v3.0, please upgrade to Galileo Print Manager v4.0. The software may be downloaded from the software library at <http://support.galileo.com/sgc/aps>
2. Follow the directions below to access the Configuration utility for Galileo Print Manager

From the Start menu, double click Computer. You will see the screen shown here.



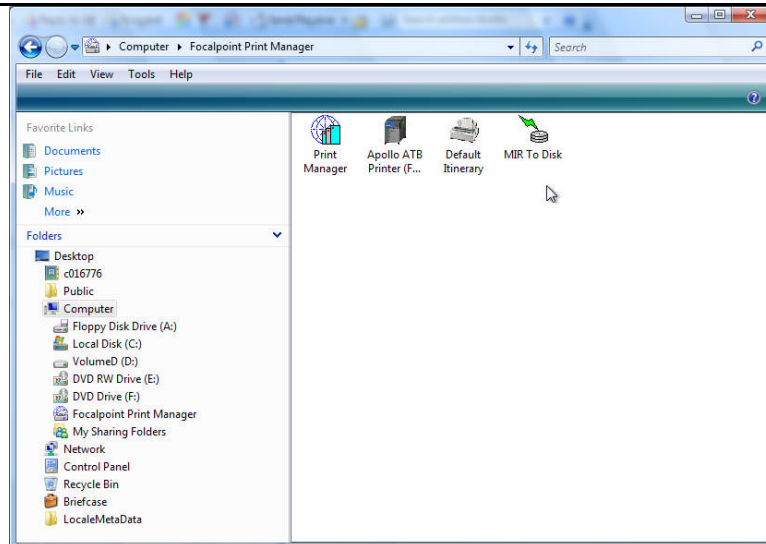
Double-click Focalpoint Print Manger.

You will see the screen shown here. Notice there is no menu with File, Edit, View, Tools and Help. By default, Vista hides many of these, just like IE 7 does.



Hold the Alt key down for a second or two and your File, Edit, View, etc. menu appears.

From here on, Galileo Print Manager works the same as it does on Window XP.



At this point, configuring GPM is the same as when using Windows 98SE, Windows 2000 or Windows XP. See the documentation for GPM on the software library page at <http://support.galileo.com/sgc/aps> or on the Galileo 360 Portal.